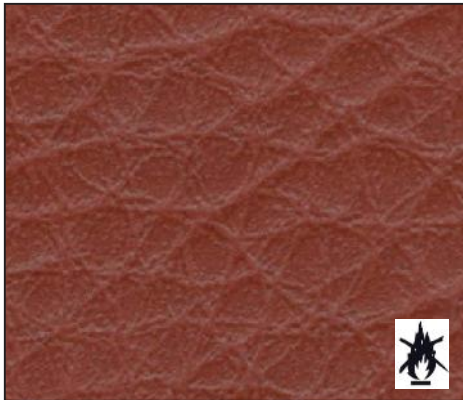


SOTEGA FLs / PRICE CLASS 6



APPLICATIONS: RETAIL - CONTRACT - UK

COMPOSITION *: 73% PVC - 2% PU - 25% CO

MARTINDALE TURNS: 51.000

FASTNESS TO LIGHT: 4-5

FABRIC WIDTH: +/- 140cm

WATER AND STAIN REPELLENT FINISH: No

UK APPROVED: YES

CLEANING INSTRUCTIONS: CLEANING WITH WATER



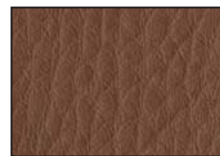
BEIGE



MASTIC



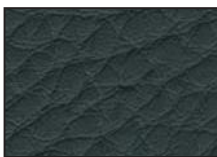
TAUPE



CACAO



BROWN



BLACK



BRIQUE

* CO	Cotton / coton / katoen / Baumwolle	PL	Polyester	VI	Viscose
LI	Linnen / lin / Leinen	WO	wool / laine / wol / Wolle		
PA	Polyamid / polyamide	PU	Polyurethan / polyurethane / polyurethaan		
PP	Polypropylen / polypropylène	PC	Polyacryl		
AF	Other fibers / autres fibres / andere vezels / andere Fasern				
AC	Acrylic / acrylique / acryl / Acryl				

ZANZIBAR / PRICE CLASS 6



APPLICATIONS: RETAIL

COMPOSITION *: 67% VI - 19% LI - 8% PL - 6% CO

MARTINDALE TURNS: 30.000

FASTNESS TO LIGHT: 4-5

FABRIC WIDTH: +/- 140cm

WATER AND STAIN REPELLENT FINISH: No

UK APPROVED: No

CLEANING INSTRUCTIONS: 



IVORY



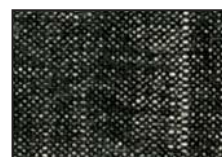
BEIGE



TAUPE



CHOCOLAT



BLACK



MOUSE



GREY



YELLOW



LILA



SILVER



BLUE



TURQUOISE



PLATINE

* CO	Cotton / coton / katoen / Baumwolle	PL	Polyester	VI	Viscose
LI	Linnen / lin / Leinen	WO	wool / laine / wol / Wolle		
PA	Polyamid / polyamide	PU	Polyurethan / polyurethane / polyurethaan		
PP	Polypropylen / polypropylène	PC	Polyacryl		
AF	Other fibers / autres fibres / andere vezels / andere Fasern				
AC	Acrylic / acrylique / acryl / Acryl				

AMARILLO / PRICE CLASS 6



APPLICATIONS: RETAIL

COMPOSITION *: 36% VI - 32% PL - 15% LI - 13% CO - 4% PC

MARTINDALE TURNS: 20.000

FASTNESS TO LIGHT: 4-5

FABRIC WIDTH: +/- 140CM

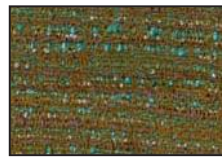
WATER AND STAIN REPELLENT FINISH: No

UK APPROVED: No

CLEANING INSTRUCTIONS: ~~△~~ ~~○~~ ~~□~~ (P) ~~□(P)~~



BEIGE



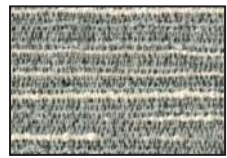
CAMEL



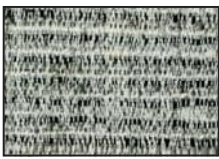
TAUPE



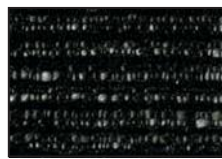
BROWN



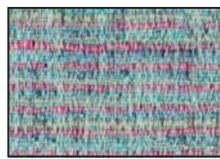
SILVER



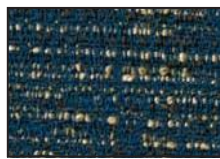
GREY



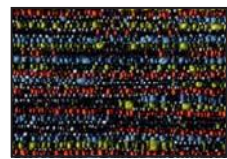
BLACK



AZUR



BLUE



PETROLE



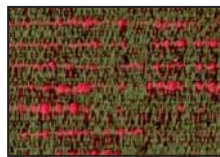
MARINE



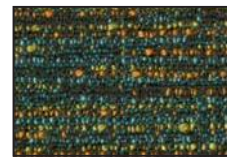
DUCK



GREEN



OLIVE



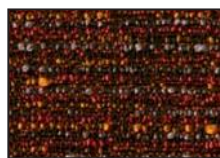
KAKI



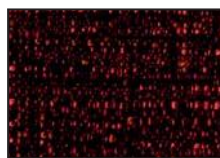
PINK



RED



ROST



BRIQUE



ORANGE

* CO	Cotton / coton / katoen / Baumwolle	PL	Polyester	VI	Viscose
LI	Linnen / lin / Leinen	WO	wool / laine / wol / Wolle		
PA	Polyamid / polyamide	PU	Polyurethan / polyurethane / polyurethaan		
PP	Polypropylen / polypropylène	PC	Polyacryl		
AF	Other fibers / autres fibres / andere vezels / andere Fasern				
AC	Acrylic / acrylique / acryl / Acryl				