

mobitec

SINCE 1990

RETAIL / CONTRACT

HIP HOP

CL2



Composition 100% PL

Martindale Turns 100.000

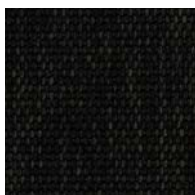
Fastness to Light 5

Fabric Width +/- 140cm

Water and Stainrepellant finish Yes

UK approved No

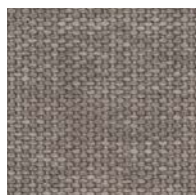
Cleaning Instructions



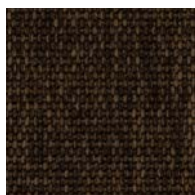
ANTHRACITE



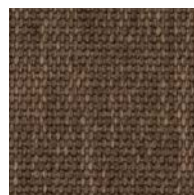
GREY



SILVER



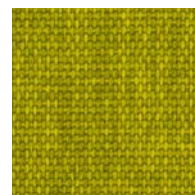
BROWN



CACAO



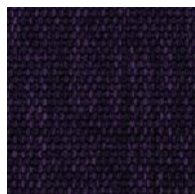
BEIGE



LIME



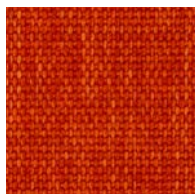
TURQUOISE



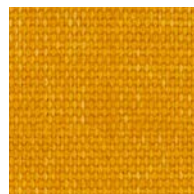
VIOLET



RED



ORANGE



YELLOW

mobitec

SINCE 1990

RETAIL / CONTRACT

ORLANDO

CL3



Composition 100% PL

Martindale Turns 30.000

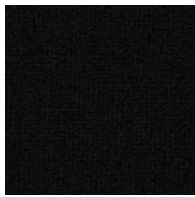
Fastness to Light 4-5

Fabric Width +/- 140cm

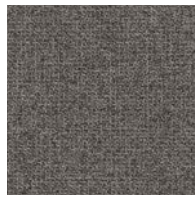
Water and Stainrepellant finish Yes

UK approved No

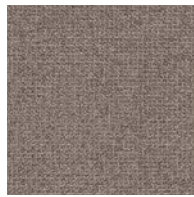
Cleaning Instructions



BLACK



GREY



MOUSE



SILVER



TAUPE



CACAO



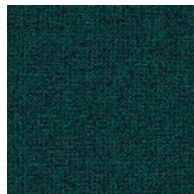
BROWN



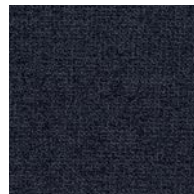
BEIGE



FOREST



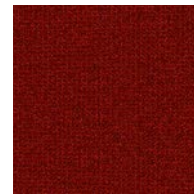
PETROL



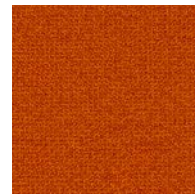
BLUE



BORDEAUX



RED



ORANGE



MUSTARD

mobitec

SINCE 1990

RETAIL / CONTRACT

TAMPA

CL3



Composition 100% PL


Martindale Turns 45.000

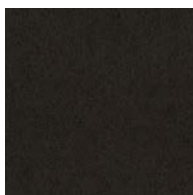
Fastness to Light 3-4

Fabric Width +/- 140cm

Water and Stainrepellant finish No

UK approved No

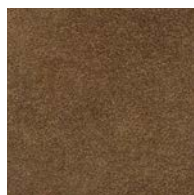
Cleaning Instructions 



ANTHRACITE



GREY



CACAO



TAUPE



NATURE

mobitec

SINCE 1990

RETAIL / CONTRACT

BERRY

CL4



Composition 100% PP

Martindale Turns 45.000

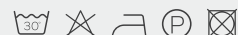
Fastness to Light ≥ 5

Fabric Width +/- 140cm

Water and Stainrepellant finish EasyClean

UK approved No

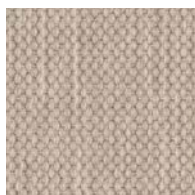
Cleaning Instructions



ANTHRACITE



MOUSE



SILVER



CACAO



TAUPE



SAND



BEIGE



GREEN



LINDEN



FOREST



JADE



AQUA



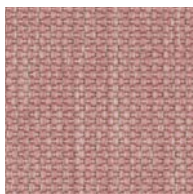
DUCK



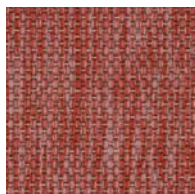
MARINE



FUCHSIA



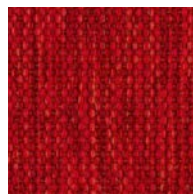
ROSE



PINK



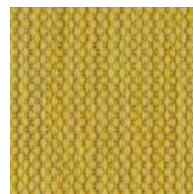
RUBIS



RED



ORANGE



YELLOW



mobitec

SINCE 1990

RETAIL ONLY

BOGOTA

CL4



Composition 39% Vi / 25% PL / 17% LI / 14% CO / 5% AC


Martindale Turns 20.000

Fastness to Light 4-5

Fabric Width +/- 140cm

Water and Stainrepellant finish No

UK approved No

Cleaning Instructions 



BLACK



ESPRESSO



GREY



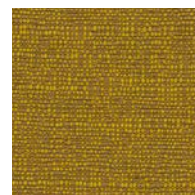
SILVER



IVORY



BEIGE



MUSTARD



JEANS



BLUE



MARINE



AUBERGINE



ROSE

mobitec

SINCE 1990

RETAIL / CONTRACT

GENOVA

CL4



Composition 100% PL

Martindale Turns 88.000

Fastness to Light 4-5

Fabric Width +/- 140cm

Water and Stainrepellant finish Yes

UK approved No

Cleaning Instructions



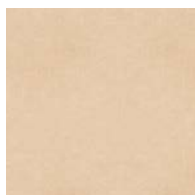
GREY



SILVER



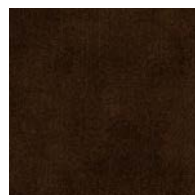
STEEL



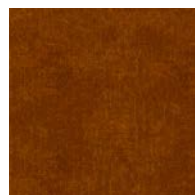
ECRU



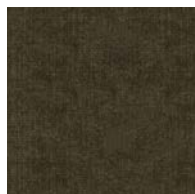
BEIGE



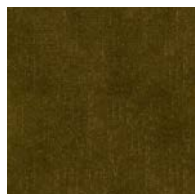
COFFEE



COGNAC



FOREST



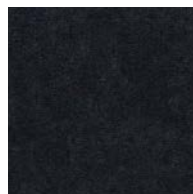
GREEN



PETROL



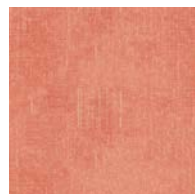
TURQUOISE



MARINE



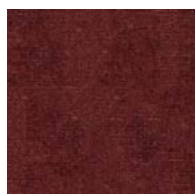
AUBERGINE



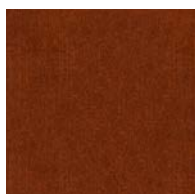
ROSE



TOURTERELLE



BORDEAUX



ROST



Composition 100% PP


Martindale Turns 45.000

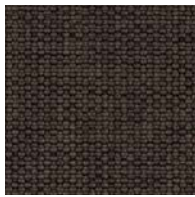
Fastness to Light ≥ 5

Fabric Width +/- 140cm

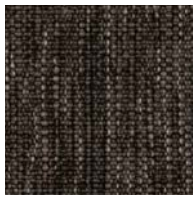
Water and Stainrepellant finish EasyClean

UK approved No

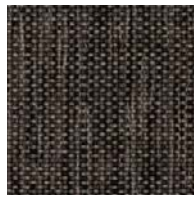
Cleaning Instructions 



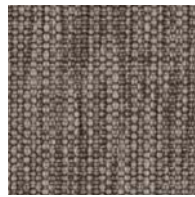
ANTHRACITE



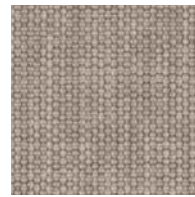
GRAPHITE



GREY



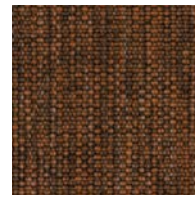
MOUSE



SILVER



DARK BROWN



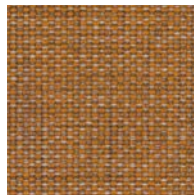
BROWN



CHOCOLATE



CAMEL



COGNAC



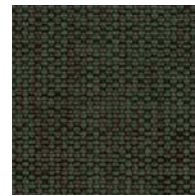
TAUPE



SAND



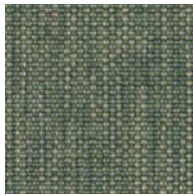
BEIGE



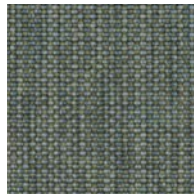
FOREST



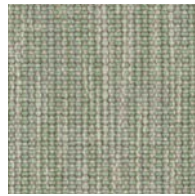
DUCK



EMERALD



TURQUOISE



JADE

mobitec

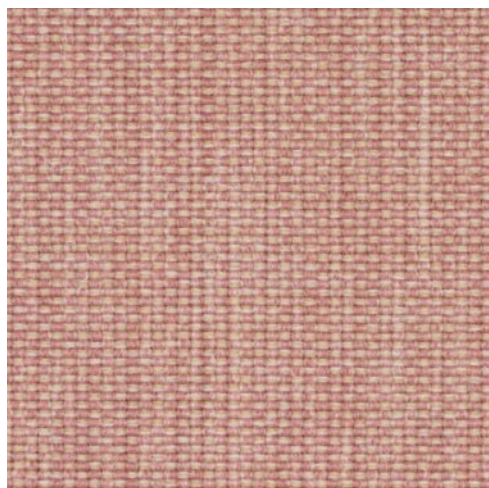
SINCE 1990



RETAIL / CONTRACT

MANGO

CL4



Composition 100% PP

Martindale Turns 45.000

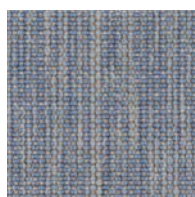
Fastness to Light ≥ 5

Fabric Width +/- 140cm

Water and Stainrepellant finish EasyClean

UK approved No

Cleaning Instructions



CIEL



BLUE



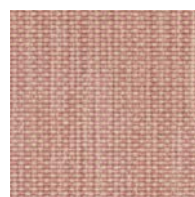
JEANS



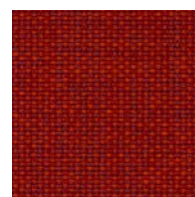
NIGHT



AUBERGINE



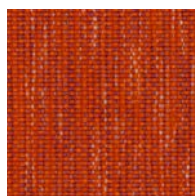
ROSE



RUBIS



RED



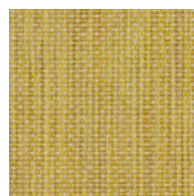
ORANGE



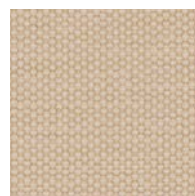
MANDARINE



YELLOW



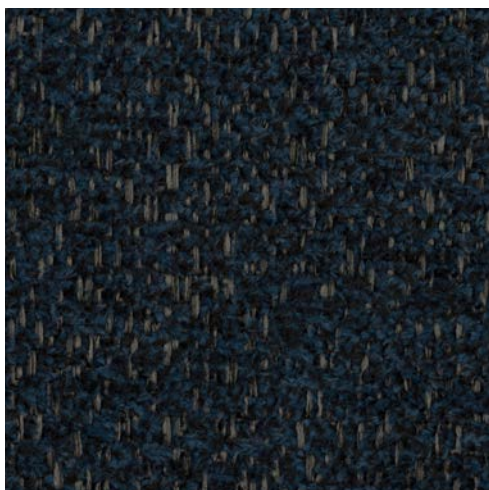
LEMON



WHITE

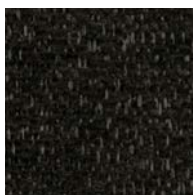


AQUACLEAN FR COLLECTION



BRENTON	
Composition	67% PL - 23% MAC - 10% CO
Martindale Turns	60.000
Fastness to Light	4-5
Fabric Width	+/- 140cm
Water and Stainrepellant finish	Yes
UK approved	Yes
Fire Norm EN:	EN 10211-2
Fire Norm UK:	BS 5852 0-1
Cleaning Instructions:	

BRENTON



ANTHRACITE



GREY



CARBONE



BROWN



CHATAIGNE



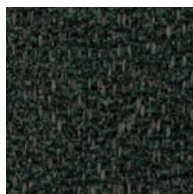
IVORY



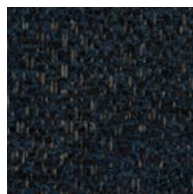
MUSTARD



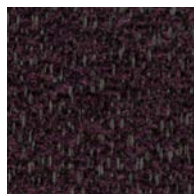
VERDE



FOREST



MARINE



AUBERGINE



ROSE



BRIQUE



DAYTONA

Composition 51% PL - 38% AC - 11% PU

Martindale Turns 200.000

Fastness to Light 6

Fabric Width +/- 140cm

Water and Stainrepellant finish Yes

UK approved Yes

Fire Norm EN: EN 10211-2

Fire Norm UK: BS 5852 0-1

Cleaning Instructions:

LAVIANO

Composition 82% PL - 12% MAC - 6% CO

Martindale Turns 100.000

Fastness to Light 6-7

Fabric Width +/- 140cm

Water and Stainrepellant finish Yes

UK approved Yes

Fire Norm EN: EN 10211-2

Fire Norm UK: BS 5852 0-1

Cleaning Instructions:

DAYTONA



TAUPE



SAND



BEIGE



MUSTARD



LINDEN



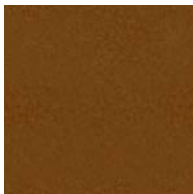
VERDE



NIGHT



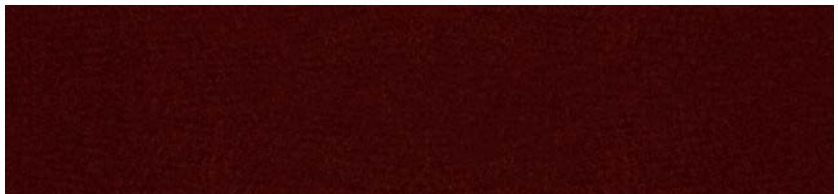
ROST



COGNAC



RUBIS



LAVIANO



CARBONE



SILVER



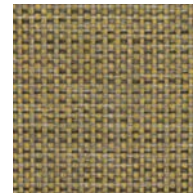
CHOCOLATE



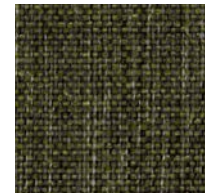
SAND



BEIGE



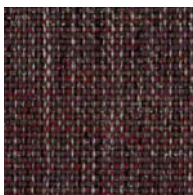
YELLOW



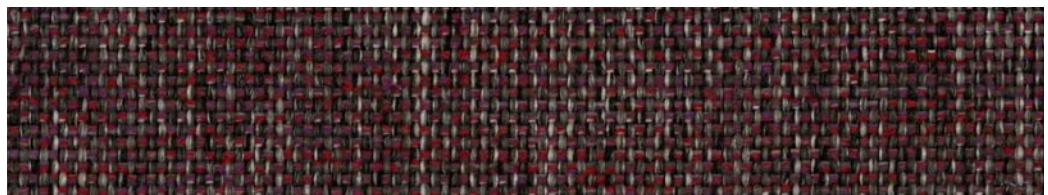
LINDEN



AQUA



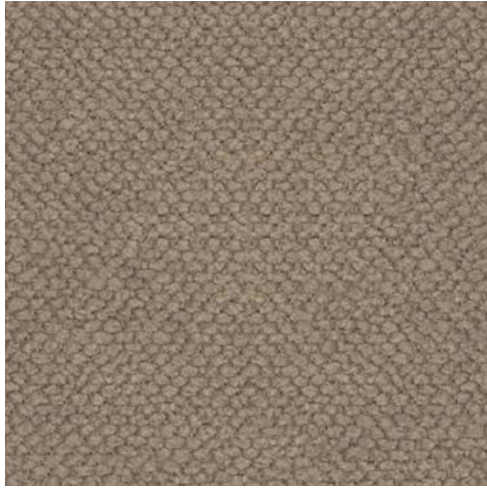
AUBERGINE





AQUACLEAN FR COLLECTION

CL5

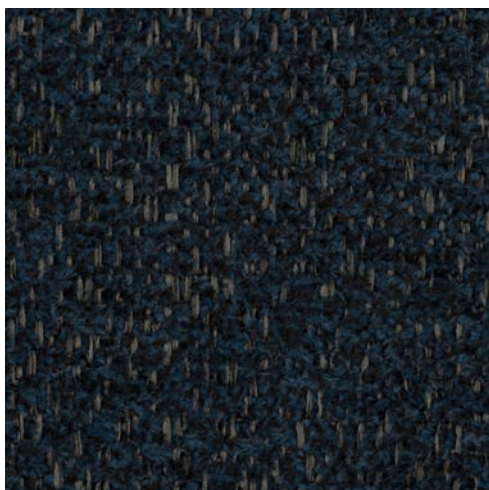


TITAN	
Composition	73% PL - 19% MAC - 8% CO
Martindale Turns	60.000
Fastness to Light	5
Fabric Width	+/- 140cm
Water and Stainrepellant finish	Yes
UK approved	Yes
Fire Norm EN:	EN 10211-2
Fire Norm UK:	BS 5852 0-1
Cleaning Instructions:	

TITAN							
	CARBONE	GREY	SILVER	BROWN	TAUPE	CHATAIGNE	IVORY
	COGNAC	MUSTARD	LINDEN	VERDE	FOREST	GREEN	DUCK
	AQUA	MARINE	NIGHT	GROSEILLE	ROSE	RUBIS	BORDEAUX

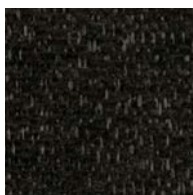


AQUACLEAN FR COLLECTION



BRENTON	
Composition	67% PL - 23% MAC - 10% CO
Martindale Turns	60.000
Fastness to Light	4-5
Fabric Width	+/- 140cm
Water and Stainrepellant finish	Yes
UK approved	Yes
Fire Norm EN:	EN 10211-2
Fire Norm UK:	BS 5852 0-1
Cleaning Instructions:	

BRENTON



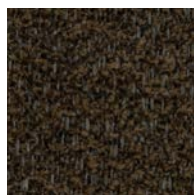
ANTHRACITE



GREY



CARBONE



BROWN



CHATAIGNE



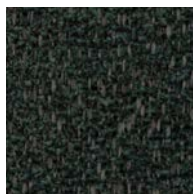
IVORY



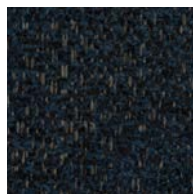
MUSTARD



VERDE



FOREST



MARINE



AUBERGINE



ROSE

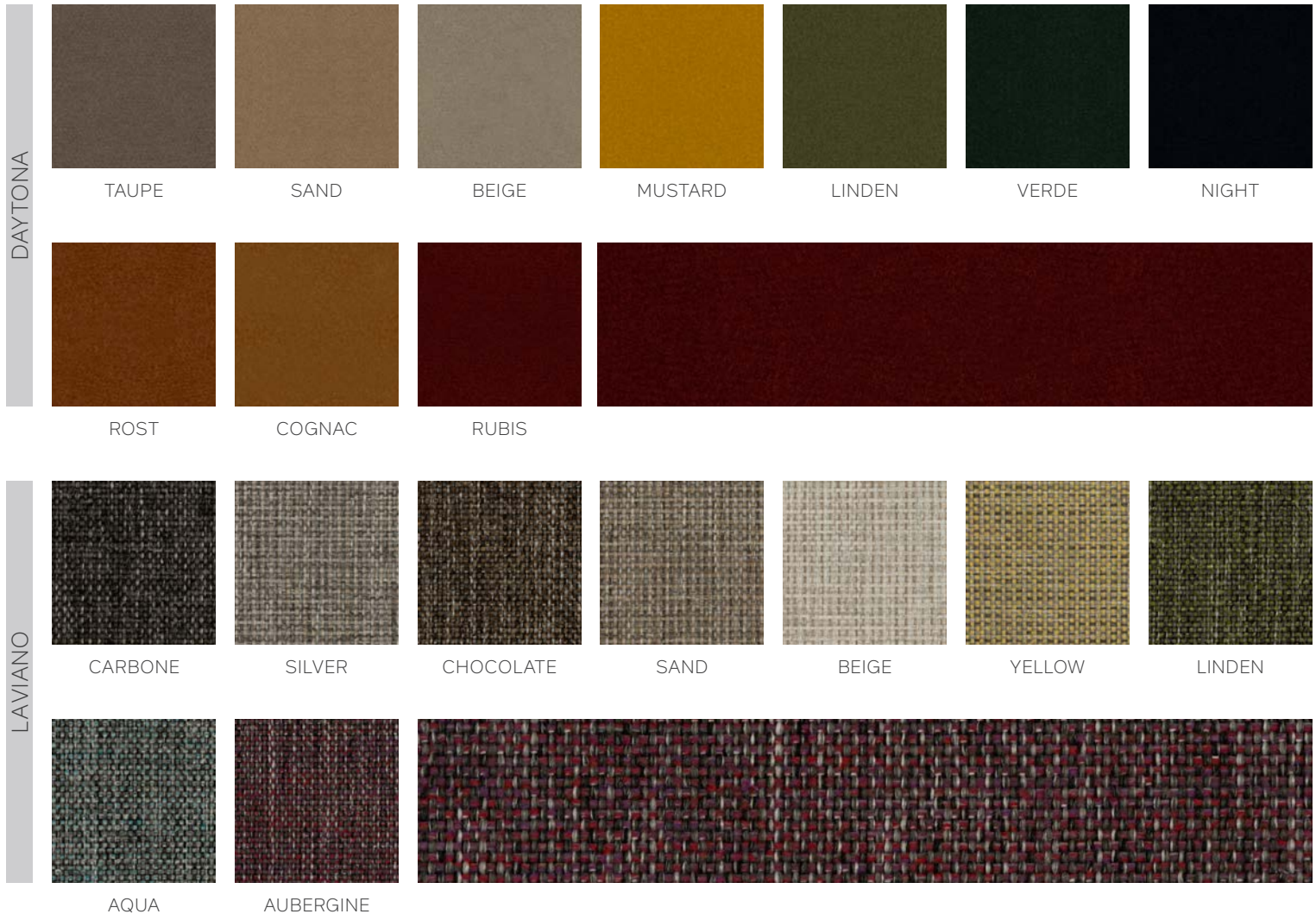


BRIQUE



DAYTONA	
Composition	51% PL - 38% AC - 11% PU
Martindale Turns	200.000
Fastness to Light	6
Fabric Width	+/- 140cm
Water and Stainrepellant finish	Yes
UK approved	Yes
Fire Norm EN:	EN 10211-2
Fire Norm UK:	BS 5852 0-1
Cleaning Instructions:	

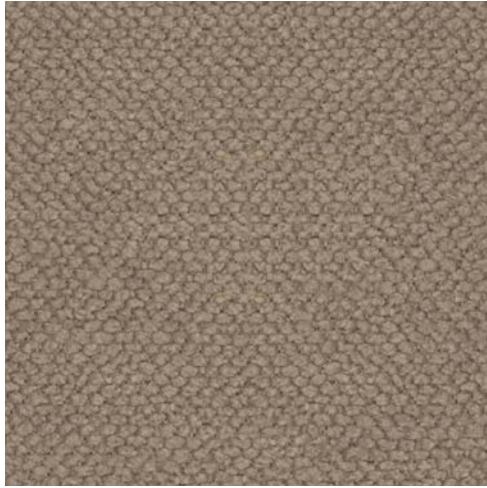
LAVIANO	
Composition	82% PL - 12% MAC - 6% CO
Martindale Turns	100.000
Fastness to Light	6-7
Fabric Width	+/- 140cm
Water and Stainrepellant finish	Yes
UK approved	Yes
Fire Norm EN:	EN 10211-2
Fire Norm UK:	BS 5852 0-1
Cleaning Instructions:	





AQUACLEAN FR COLLECTION

CL5

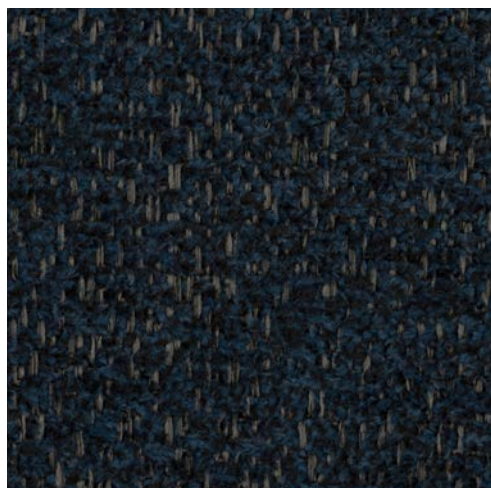


TITAN	
Composition	73% PL - 19% MAC - 8% CO
Martindale Turns	60.000
Fastness to Light	5
Fabric Width	+/- 140cm
Water and Stainrepellant finish	Yes
UK approved	Yes
Fire Norm EN:	EN 10211-2
Fire Norm UK:	BS 5852 0-1
Cleaning Instructions:	

TITAN							
	CARBONE	GREY	SILVER	BROWN	TAUPE	CHATAIGNE	IVORY
	COGNAC	MUSTARD	LINDEN	VERDE	FOREST	GREEN	DUCK
	AQUA	MARINE	NIGHT	GROSEILLE	ROSE	RUBIS	BORDEAUX

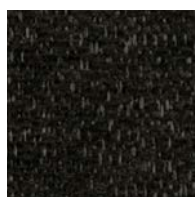


AQUACLEAN FR COLLECTION

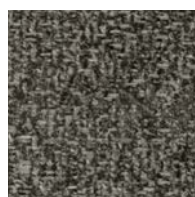


BRENTON	
Composition	67% PL - 23% MAC - 10% CO
Martindale Turns	60.000
Fastness to Light	4-5
Fabric Width	+/- 140cm
Water and Stainrepellant finish	Yes
UK approved	Yes
Fire Norm EN:	EN 10211-2
Fire Norm UK:	BS 5852 0-1
Cleaning Instructions:	

BRENTON



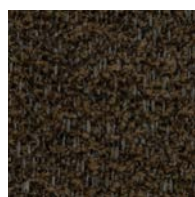
ANTHRACITE



GREY



CARBONE



BROWN



CHATAIGNE



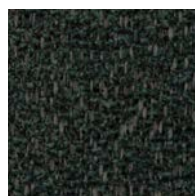
IVORY



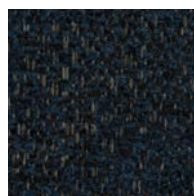
MUSTARD



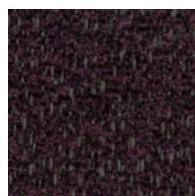
VERDE



FOREST



MARINE



AUBERGINE



ROSE

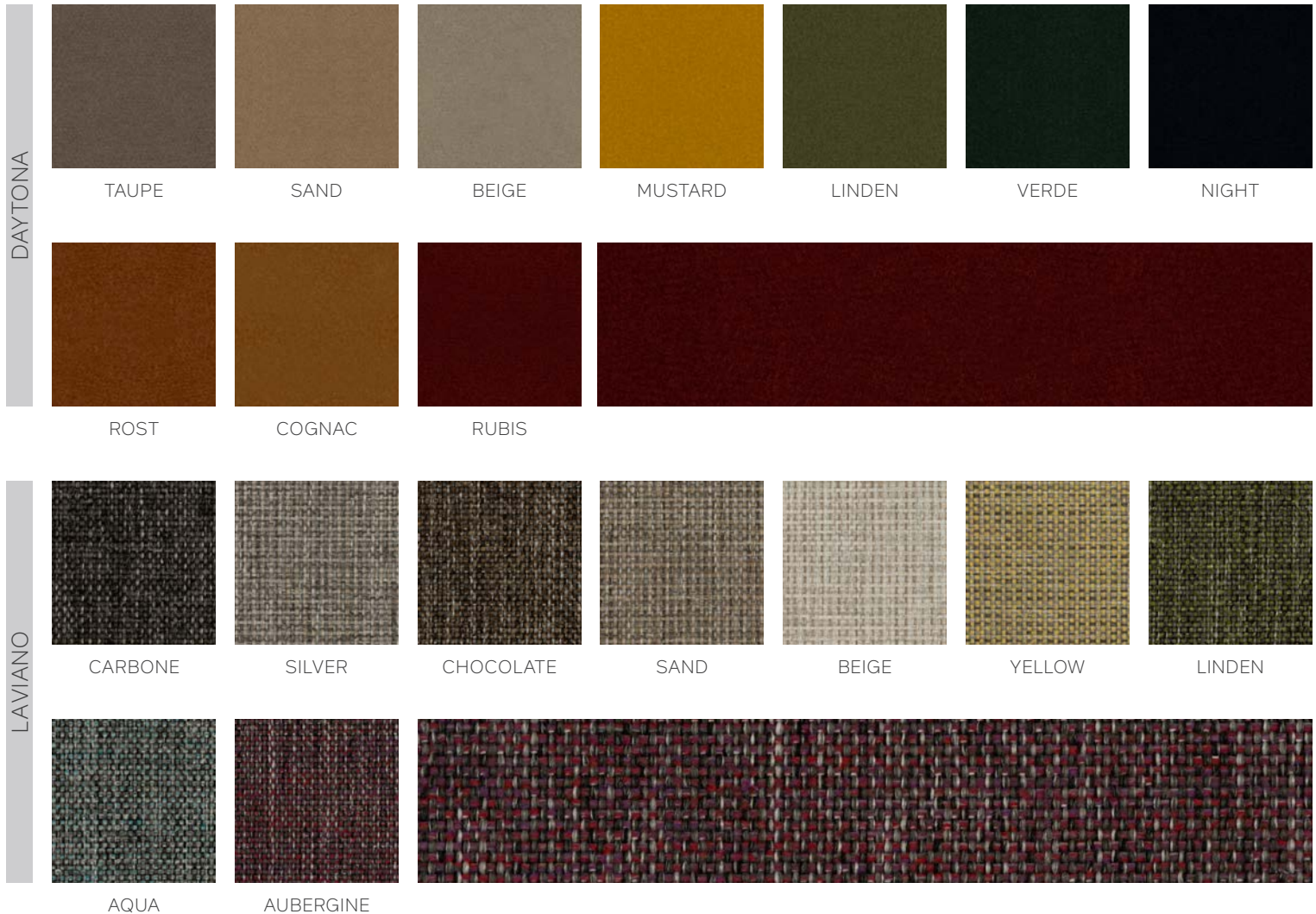


BRIQUE



DAYTONA	
Composition	51% PL - 38% AC - 11% PU
Martindale Turns	200.000
Fastness to Light	6
Fabric Width	+/- 140cm
Water and Stainrepellant finish	Yes
UK approved	Yes
Fire Norm EN:	EN 10211-2
Fire Norm UK:	BS 5852 0-1
Cleaning Instructions:	

LAVIANO	
Composition	82% PL - 12% MAC - 6% CO
Martindale Turns	100.000
Fastness to Light	6-7
Fabric Width	+/- 140cm
Water and Stainrepellant finish	Yes
UK approved	Yes
Fire Norm EN:	EN 10211-2
Fire Norm UK:	BS 5852 0-1
Cleaning Instructions:	





AQUACLEAN FR COLLECTION

CL5



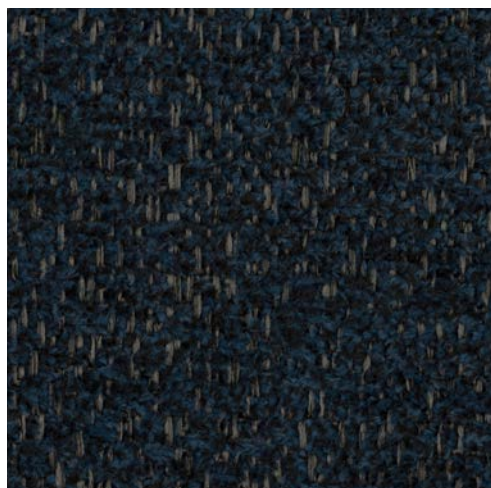
TITAN	
Composition	73% PL - 19% MAC - 8% CO
Martindale Turns	60.000
Fastness to Light	5
Fabric Width	+/- 140cm
Water and Stainrepellant finish	Yes
UK approved	Yes
Fire Norm EN:	EN 10211-2
Fire Norm UK:	BS 5852 0-1
Cleaning Instructions:	

TITAN							
	CARBONE	GREY	SILVER	BROWN	TAUPE	CHATAIGNE	IVORY
	COGNAC	MUSTARD	LINDEN	VERDE	FOREST	GREEN	DUCK
	AQUA	MARINE	NIGHT	GROSEILLE	ROSE	RUBIS	BORDEAUX

AQUACLEAN FR COLLECTION

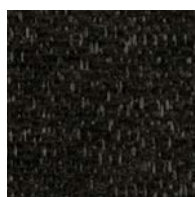


CL5

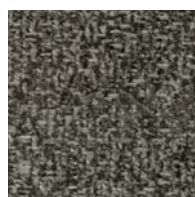


BRENTON	
Composition	67% PL - 23% MAC - 10% CO
Martindale Turns	60.000
Fastness to Light	4-5
Fabric Width	+/- 140cm
Water and Stainrepellant finish	Yes
UK approved	Yes
Fire Norm EN:	EN 10211-2
Fire Norm UK:	BS 5852 0-1
Cleaning Instructions:	

BRENTON



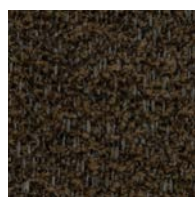
ANTHRACITE



GREY



CARBONE



BROWN



CHATAIGNE



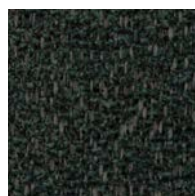
IVORY



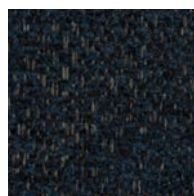
MUSTARD



VERDE



FOREST



MARINE



AUBERGINE



ROSE

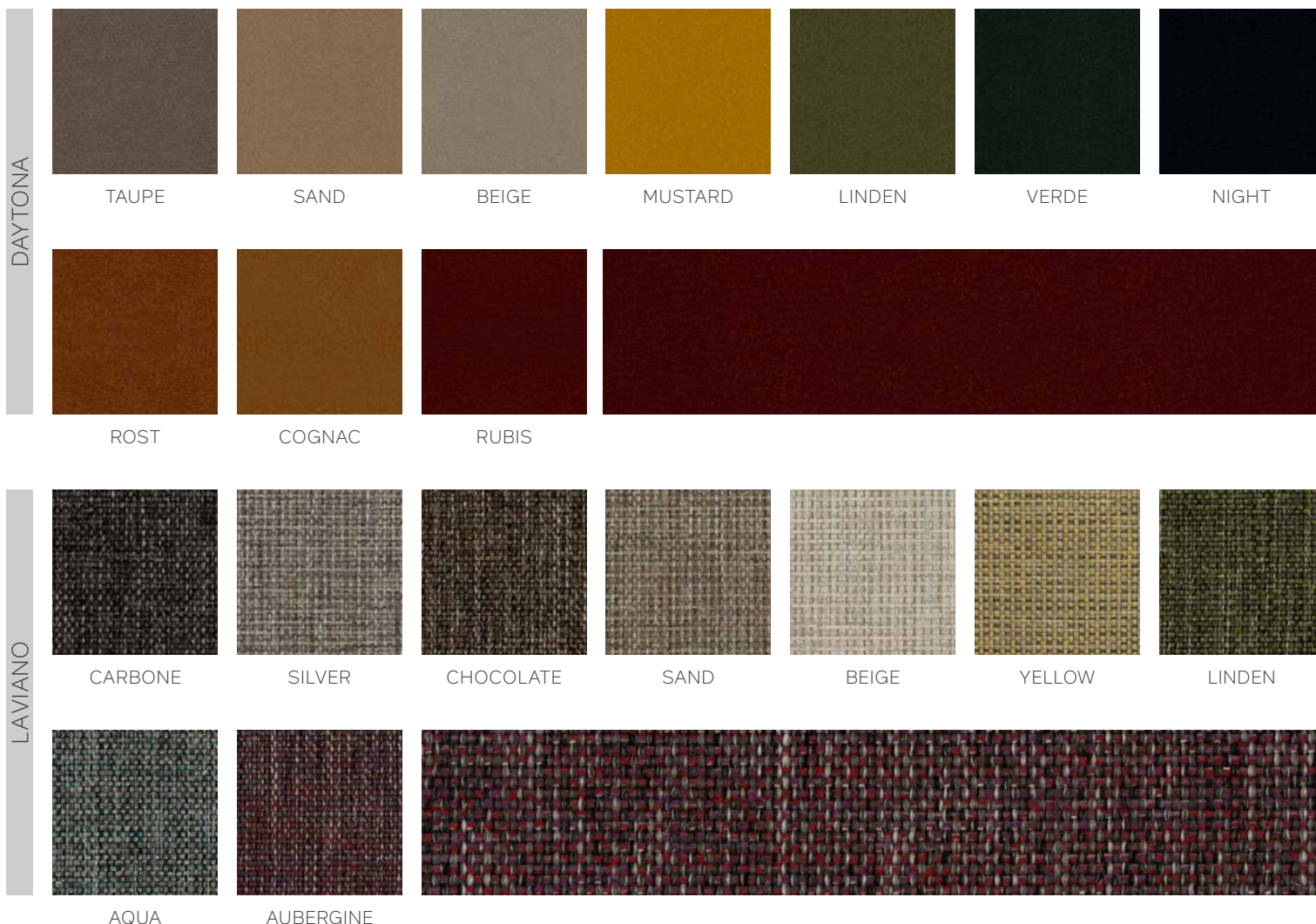


BRIQUE



DAYTONA	
Composition	51% PL - 38% AC - 11% PU
Martindale Turns	200.000
Fastness to Light	6
Fabric Width	+/- 140cm
Water and Stainrepellant finish	Yes
UK approved	Yes
Fire Norm EN:	EN 10211-2
Fire Norm UK:	BS 5852 0-1
Cleaning Instructions:	

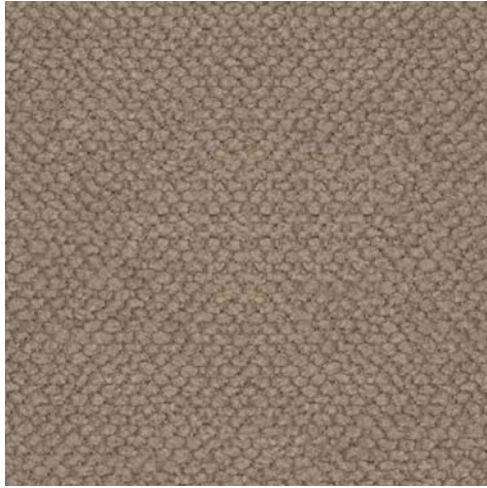
LAVIANO	
Composition	82% PL - 12% MAC - 6% CO
Martindale Turns	100.000
Fastness to Light	6-7
Fabric Width	+/- 140cm
Water and Stainrepellant finish	Yes
UK approved	Yes
Fire Norm EN:	EN 10211-2
Fire Norm UK:	BS 5852 0-1
Cleaning Instructions:	





AQUACLEAN FR COLLECTION

CL5



TITAN	
Composition	73% PL - 19% MAC - 8% CO
Martindale Turns	60.000
Fastness to Light	5
Fabric Width	+/- 140cm
Water and Stainrepellant finish	Yes
UK approved	Yes
Fire Norm EN:	EN 10211-2
Fire Norm UK:	BS 5852 0-1
Cleaning Instructions:	

TITAN							
	CARBONE	GREY	SILVER	BROWN	TAUPE	CHATAIGNE	IVORY
	COGNAC	MUSTARD	LINDEN	VERDE	FOREST	GREEN	DUCK
	AQUA	MARINE	NIGHT	GROSEILLE	ROSE	RUBIS	BORDEAUX

mobitec

SINCE 1990

RETAIL / CONTRACT

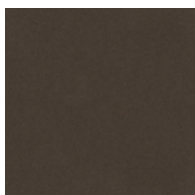


CAPRI

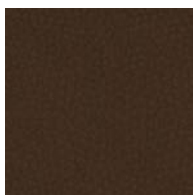
CL5



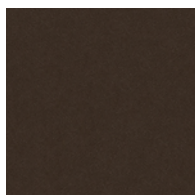
Composition	8% PL / 92% PVC
Martindale Turns	100.000
Fastness to Light	5-6
Fabric Width	+/- 140cm
Water and Stainrepellant finish	No
UK approved	Yes
Fire Norm EN:	YES / EN 1021/1-2
Fire Norm UK:	YES / BS 5852/1-2
Cleaning Instructions	Clean with water



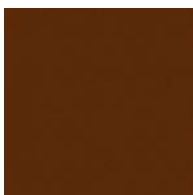
GREY



BROWN



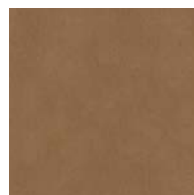
CHOCOLATE



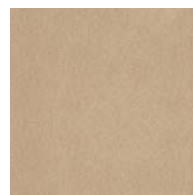
COFFEE



MASTIC



TAUPE



BEIGE



GINKGO

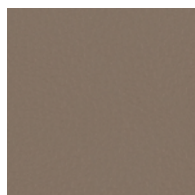
CL5



Composition	85% PVC / 15% CO
Martindale Turns	100.000
Fastness to Light	6
Fabric Width	+/- 140cm
Water and Stainrepellant finish	No
UK approved	Yes
Cleaning Instructions	Clean with water



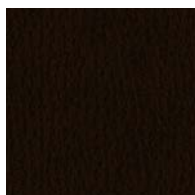
BLANC



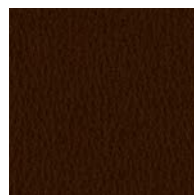
PIERRE



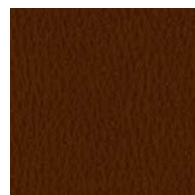
SOURIS



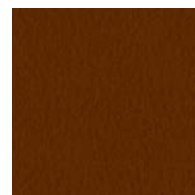
ANTHRACITE



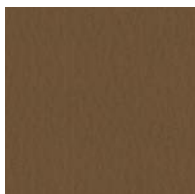
CHOCOLAT



CAFE



CHATAIGNE



TERRE



TAUPE



CAPPUCINO



DUNE



MASTIC



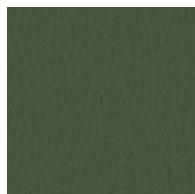
SEIGLE



AMANDE



GRANY



VERT



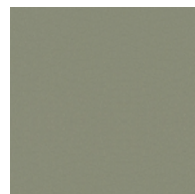
MENTHE



GLACIER



TURQUOISE



AIGUE MARINE



PETROL

mobitec

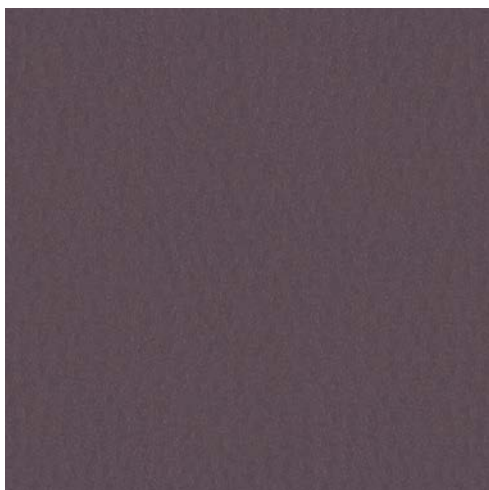
SINCE 1990

CONTRACT ONLY

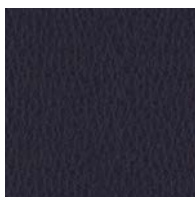
GINKGO



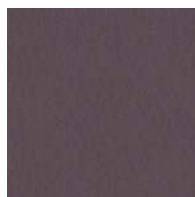
CL5



Composition	85% PVC / 15% CO
Martindale Turns	100.000
Fastness to Light	6
Fabric Width	+/- 140cm
Water and Stainrepellant finish	No
UK approved	Yes
Cleaning Instructions	Clean with water



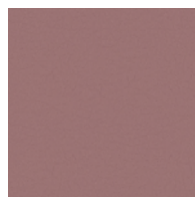
NUIT



LAVANDE



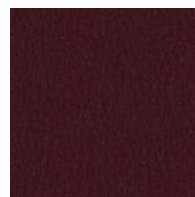
QUETSCHÉ



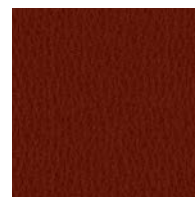
LILA



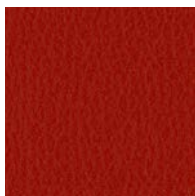
BEGONIA



MYRTILLE



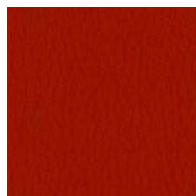
MORGON



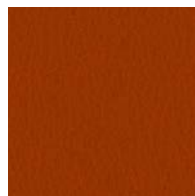
PIVOINE



GROSEILLE



RED



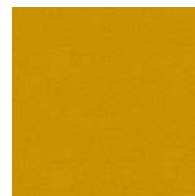
TOMETTE



CITROUILLE



MIRABELLE



ENDIVE

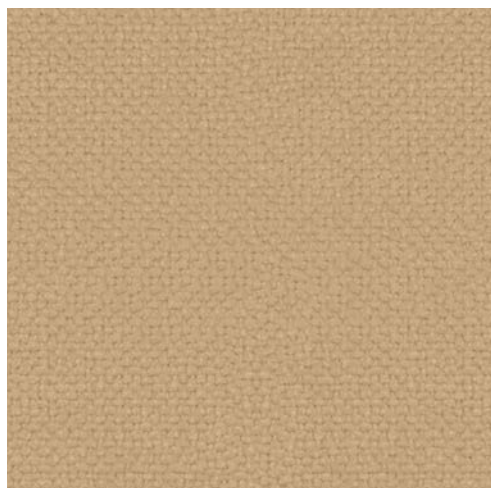
mobitec

SINCE 1990

RETAIL / CONTRACT

MYSTIC*

CL5



Composition 100% PL

Martindale Turns 150.000

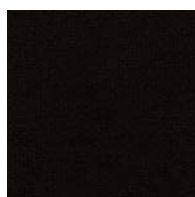
Fastness to Light 5

Fabric Width +/- 140cm

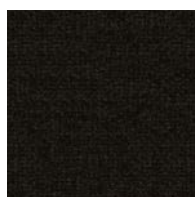
Water and Stainrepellant finish Aqua Clean

UK approved No

Cleaning Instructions



BLACK



ANTHRACITE



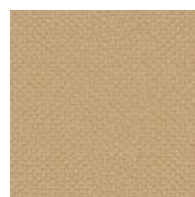
GREY



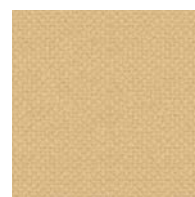
MOUSE



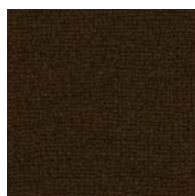
SILVER



ECRU



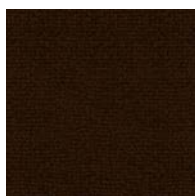
IVORY



BROWN



COFFEE



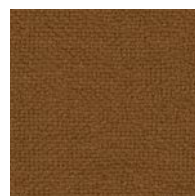
CACAO



CARBONE



ESPRESSO



MOCCA



TAUPE



CHATAIGNE



CARMEL

*

EXCLUSIVE - ONLY IF PRODUCTS DULY DISPLAYED IN SHOWROOM.
EXCLUSIF - SOUS CONDITION DE PLACEMENT EN EXPOSITION.
EXCLUSIEF - ALLEEN OP VOORWAARDE DAT DE PRODUKTEN IN SHOWROOM GEPLAATST WORDEN.
EXKLUSIV NUR ÜBER AUSSTELLUNSPLATZIERUNG ERHÄLTICH.

mobitec

SINCE 1990

RETAIL / CONTRACT

MYSTIC*

CL5



Composition 100% PL

Martindale Turns 150.000

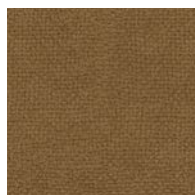
Fastness to Light 5

Fabric Width +/- 140cm

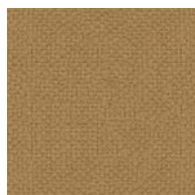
Water and Stainrepellant finish Aqua Clean

UK approved No

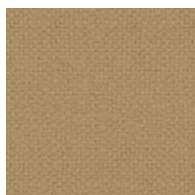
Cleaning Instructions



LINEN



SAND



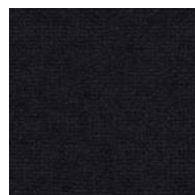
BEIGE



GREEN



DUCK



MARINE



AUBERGINE



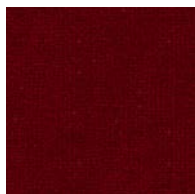
LILA



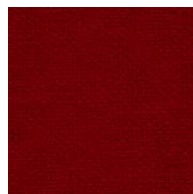
PINK



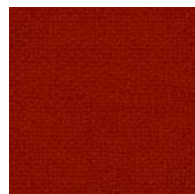
TOURTERELLE



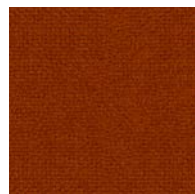
BORDEAUX



BRIQUE



RED



ROST



ORANGE



MUSTARD

*

EXCLUSIVE - ONLY IF PRODUCTS DULY DISPLAYED IN SHOWROOM.
EXCLUSIF - SOUS CONDITION DE PLACEMENT EN EXPOSITION.
EXCLUSIEF - ALLEEN OP VOORWAARDE DAT DE PRODUCTEN IN SHOWROOM GEPLAATST WORDEN.
EXKLUSIV NUR ÜBER AUSSTELLUNSPLATZIERUNG ERHÄLTICH.

mobitec

SINCE 1990

RETAIL ONLY

OTELLO

CL5



Composition 72% PL / 28% PP






Martindale Turns 92.000

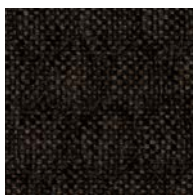
Fastness to Light 4-5

Fabric Width +/- 140cm

Water and Stainrepellant finish No

UK approved No

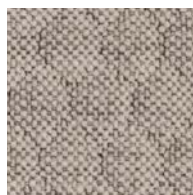
Cleaning Instructions     



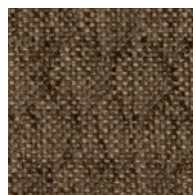
ANTHRACITE



GREY



WHITE



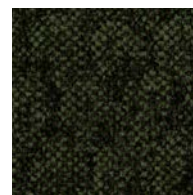
TAUPE



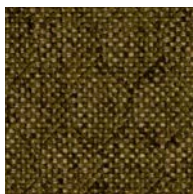
SAND



BEIGE



FOREST



GREEN



MINT



ROSE

mobitec

SINCE 1990

RETAIL / CONTRACT

SOTEGA

CL5



Composition 73% PVC / 2% PU / 25% CO

Martindale Turns 51.000

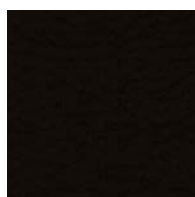
Fastness to Light 4-5

Fabric Width +/- 140cm

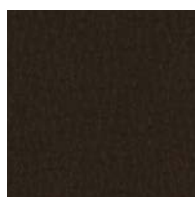
Water and Stainrepellant finish No

UK approved No

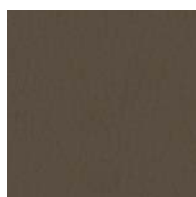
Cleaning Instructions Clean with water



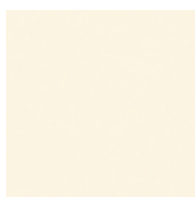
BLACK



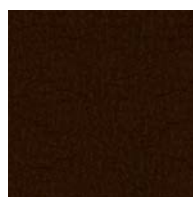
ANTHRACITE



GREY



WHITE



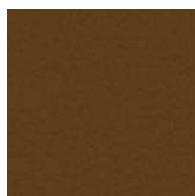
BROWN



MOKKA



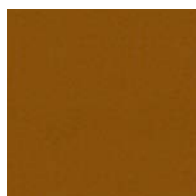
WALNUT



TAUPE



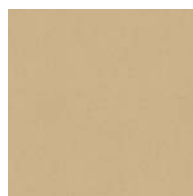
CENDRE



DAIM



MASTIC



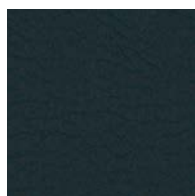
BEIGE



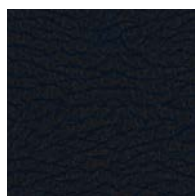
LIME



AQUA



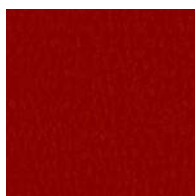
PETROL



OCEAN



CARMINE



RED



COGNAC

mobitec

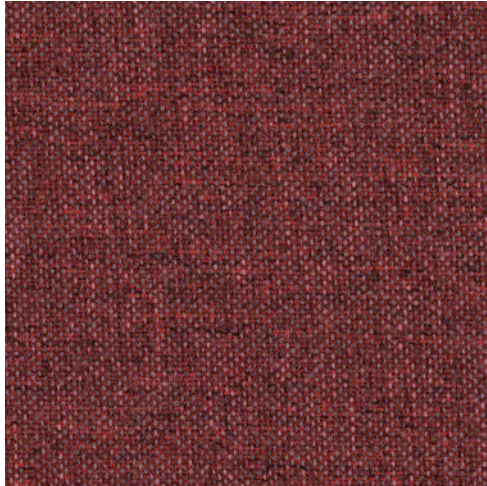
SINCE 1990

CONTRACT ONLY

TREVIRA CS FR COLLECTION



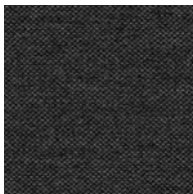
CL5



GAFFARO

Composition	100% PL - Trevira CS®
Martindale Turns	70.000
Fastness to Light	6
Fabric Width / Weight	+/- 140cm / 350g/lm
Water and Stainrepellant	No
UK approved	Yes

Cleaning Instructions:



ANTHRACITE



GREY



BEIGE



MUSTARD



GREEN



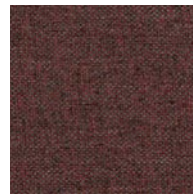
AQUA



JEANS



BLUE



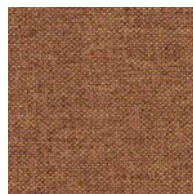
BORDEAUX



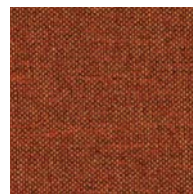
FUCHSIA



ROSE



PEACH



ROST

GAFFARO

TREVIRA CS® COLLECTION FLAMMABILITY

UNI 9174-8456 Class C1
DIN 4102 Class B1
NF 92501-7 Class M1
CRIB 5
EN 1021/1-2
IMO Part 8 Upholstery
UNI 9175 Class 1Im
BS 7176 Medium Hazard
NF D 60013 Class AM 18

mobitec

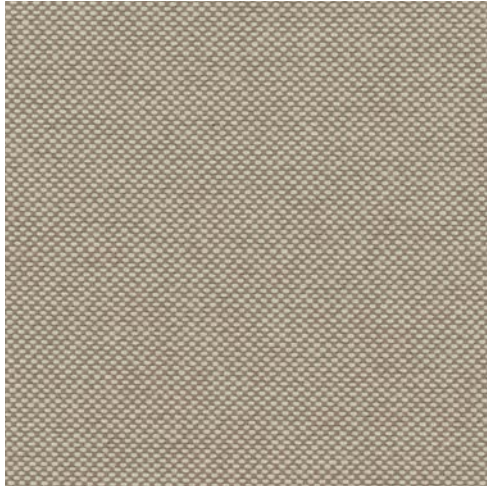
SINCE 1990

CONTRACT ONLY

TREVIRA CS FR COLLECTION



CL5

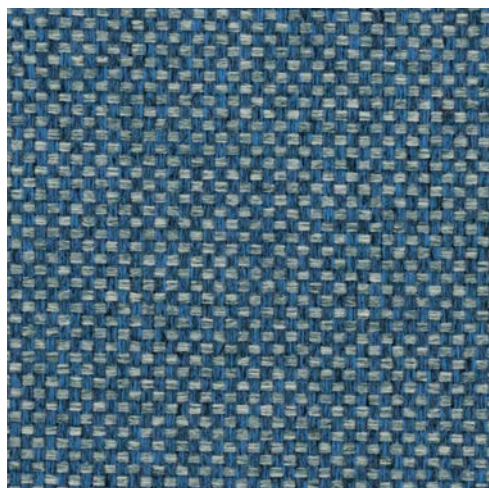






GRECI	
Composition	100% PL - Trevira CS®
Martindale Turns	70.000
Fastness to Light	6
Fabric Width / Weight	+/- 140cm / 365g/lm
Water and Stainrepellant	No
UK approved	Yes
Cleaning Instructions:	   



TREVIRA CS® COLLECTION FLAMMABILITY

UNI 9174-8456 Class C1
DIN 4102 Class B1
NF 92501-7 Class M1
CRIB 5
EN 1021/1-2
IMO Part 8 Upholstery
UNI 9175 Class 1Im
BS 7176 Medium Hazard
NF D 60013 Class AM 18



OLIO	
Composition	100% PL - Trevira CS®
Martindale Turns	75.000
Fastness to Light	6
Fabric Width / Weight	+/- 150cm / 600g/lm
Water and Stainrepellant	No
UK approved	Yes
Cleaning Instructions:	   



ANTHRACITE

CHOCOLATE

SAND

BEIGE

LINDEN

GREEN

CIEL

FUCHSIA



BRIQUE

ROST

TREVIRA CS® COLLECTION FLAMMABILITY

UNI 9174-8456 Class C1
 DIN 4102 Class B1
 NF 92501-7 Class M1
 CRIB 5
 EN 1021/1-2
 IMO Part 8 Upholstery
 UNI 9175 Class 1Im
 BS 7176 Medium Hazard
 NF D 60013 Class AM 18



PAGLIA	
Composition	100% PL - Trevira CS®
Martindale Turns	70.000
Fastness to Light	6
Fabric Width / Weight	+/- 150cm / 560g/lm
Water and Stainrepellant	No
UK approved	Yes
Cleaning Instructions:	   



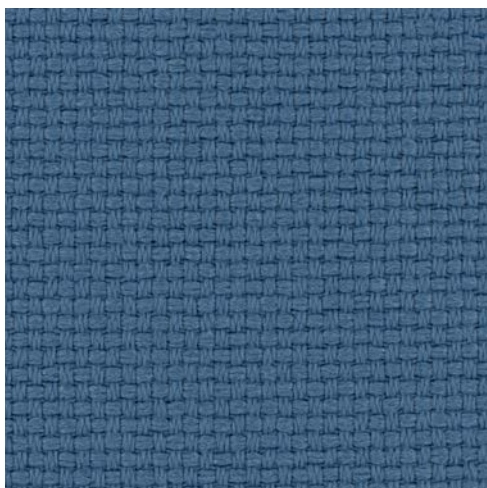
TREVIRA CS® COLLECTION FLAMMABILITY





UNI 9174-8456 Class C1
 DIN 4102 Class B1
 NF 92501-7 Class M1
 CRIB 5
 EN 1021/1-2
 IMO Part 8 Upholstery
 UNI 9175 Class 1Im
 BS 7176 Medium Hazard
 NF D 60013 Class AM 18

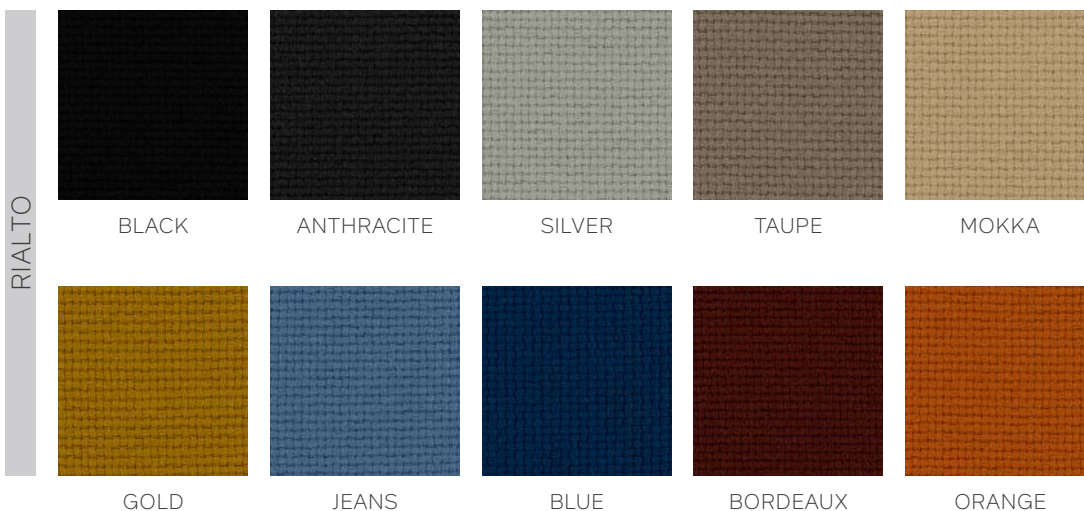


TREVIRA CS FR COLLECTION

CL7



RIALTO	
Composition	100% PL - Trevira CS®
Martindale Turns	150.000
Fastness to Light	6
Fabric Width / Weight	+/- 150cm / 735g/lm
Water and Stainrepellant	No
UK approved	Yes
Cleaning Instructions:	   



RIALTO

BLACK

ANTHRACITE

SILVER

TAUPE

MOKKA

GOLD

JEANS

BLUE

BORDEAUX

ORANGE

TREVIRA CS® COLLECTION FLAMMABILITY

UNI 9174-8456 Class C1
 DIN 4102 Class B1
 NF 92501-7 Class M1
 CRIB 5
 EN 1021/1-2
 IMO Part 8 Upholstery
 UNI 9175 Class 1Im
 BS 7176 Medium Hazard
 NF D 60013 Class AM 18

mobitec

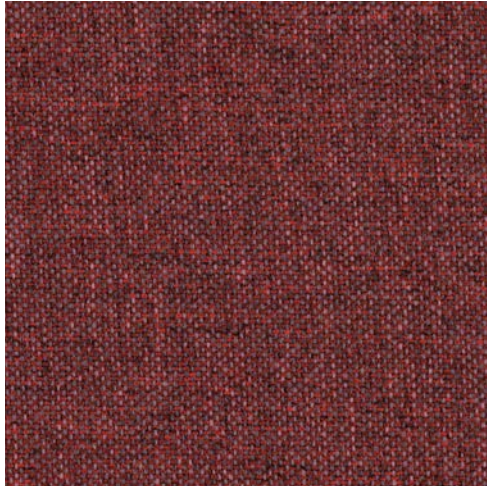
SINCE 1990

CONTRACT ONLY

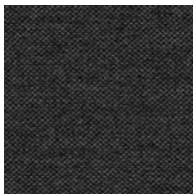
TREVIRA CS FR COLLECTION



CL5



GAFFARO	
Composition	100% PL - Trevira CS®
Martindale Turns	70.000
Fastness to Light	6
Fabric Width / Weight	+/- 140cm / 350g/lm
Water and Stainrepellant	No
UK approved	Yes
Cleaning Instructions:	



ANTHRACITE



GREY



BEIGE



MUSTARD



GREEN



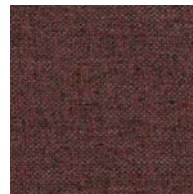
AQUA



JEANS



BLUE



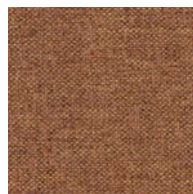
BORDEAUX



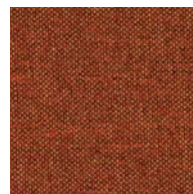
FUCHSIA



ROSE



PEACH



ROST

GAFFARO

TREVIRA CS® COLLECTION FLAMMABILITY

UNI 9174-8456 Class C1
DIN 4102 Class B1
NF 92501-7 Class M1
CRIB 5
EN 1021/1-2
IMO Part 8 Upholstery
UNI 9175 Class 1Im
BS 7176 Medium Hazard
NF D 60013 Class AM 18

mobitec

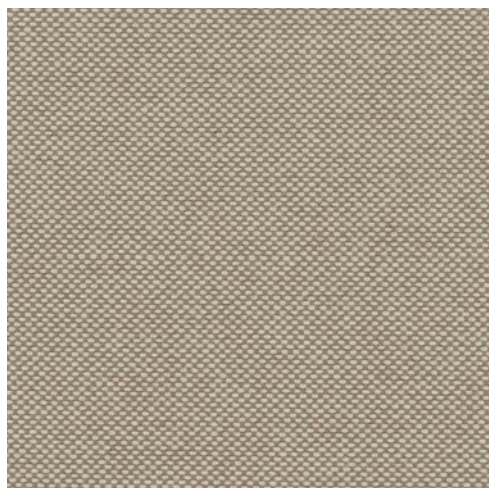
SINCE 1990

CONTRACT ONLY

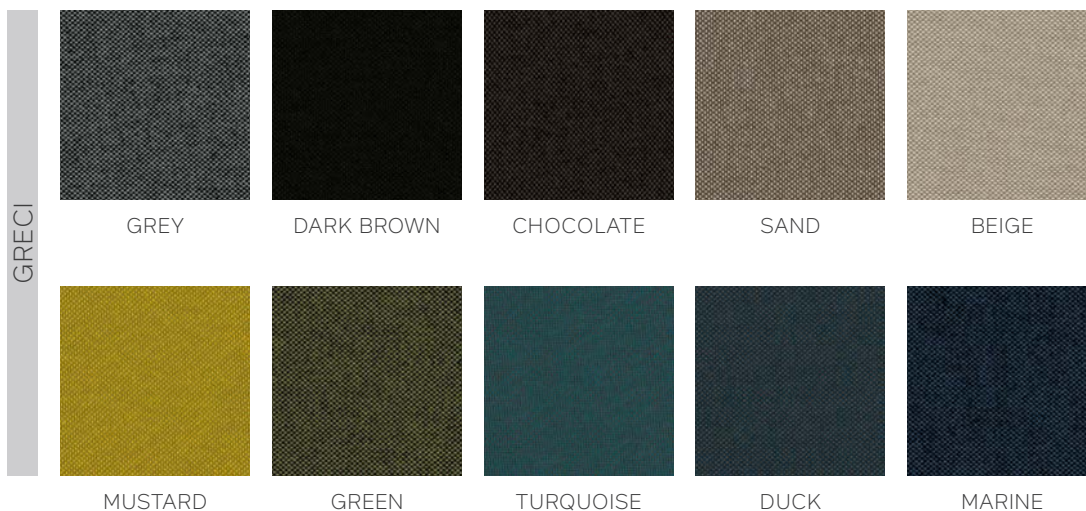
TREVIRA CS FR COLLECTION



CL5

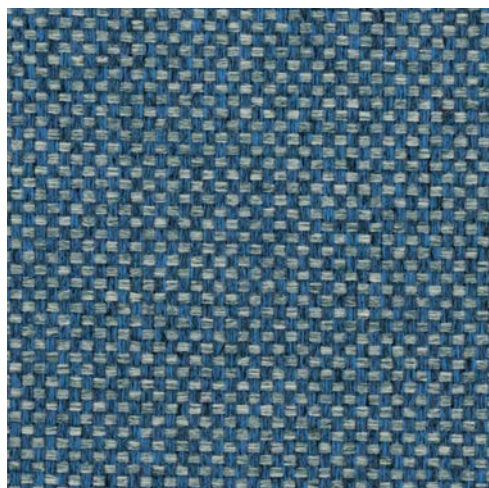






GRECI	
Composition	100% PL - Trevira CS®
Martindale Turns	70.000
Fastness to Light	6
Fabric Width / Weight	+/- 140cm / 365g/lm
Water and Stainrepellant	No
UK approved	Yes
Cleaning Instructions:	   



TREVIRA CS® COLLECTION FLAMMABILITY

UNI 9174-8456 Class C1
DIN 4102 Class B1
NF 92501-7 Class M1
CRIB 5
EN 1021/1-2
IMO Part 8 Upholstery
UNI 9175 Class 1Im
BS 7176 Medium Hazard
NF D 60013 Class AM 18



OLIO	
Composition	100% PL - Trevira CS®
Martindale Turns	75.000
Fastness to Light	6
Fabric Width / Weight	+/- 150cm / 600g/lm
Water and Stainrepellant	No
UK approved	Yes
Cleaning Instructions:	   



ANTHRACITE

CHOCOLATE

SAND

BEIGE

LINDEN

GREEN

CIEL

FUCHSIA

BRIQUE

ROST

TREVIRA CS® COLLECTION FLAMMABILITY

UNI 9174-8456 Class C1
 DIN 4102 Class B1
 NF 92501-7 Class M1
 CRIB 5
 EN 1021/1-2
 IMO Part 8 Upholstery
 UNI 9175 Class 1Im
 BS 7176 Medium Hazard
 NF D 60013 Class AM 18

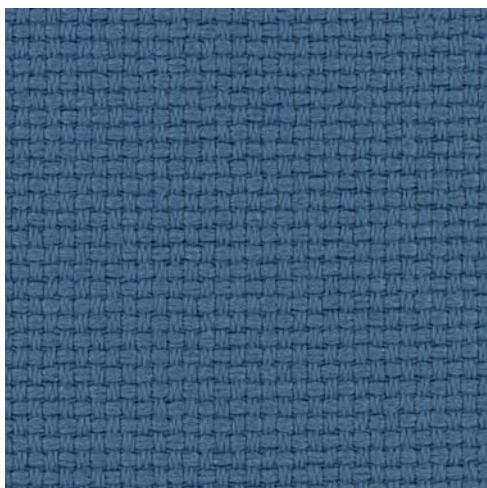






PAGLIA	
Composition	100% PL - Trevira CS®
Martindale Turns	70.000
Fastness to Light	6
Fabric Width / Weight	+/- 150cm / 560g/lm
Water and Stainrepellant	No
UK approved	Yes
Cleaning Instructions:	   



TREVIRA CS® COLLECTION FLAMMABILITY

UNI 9174-8456 Class C1
 DIN 4102 Class B1
 NF 92501-7 Class M1
 CRIB 5
 EN 1021/1-2
 IMO Part 8 Upholstery
 UNI 9175 Class 1Im
 BS 7176 Medium Hazard
 NF D 60013 Class AM 18



RIALTO	
Composition	100% PL - Trevira CS®
Martindale Turns	150.000
Fastness to Light	6
Fabric Width / Weight	+/- 150cm / 735g/lm
Water and Stainrepellant	No
UK approved	Yes
Cleaning Instructions:	   



TREVIRA CS® COLLECTION FLAMMABILITY

UNI 9174-8456 Class C1
 DIN 4102 Class B1
 NF 92501-7 Class M1
 CRIB 5
 EN 1021/1-2
 IMO Part 8 Upholstery
 UNI 9175 Class 1Im
 BS 7176 Medium Hazard
 NF D 60013 Class AM 18

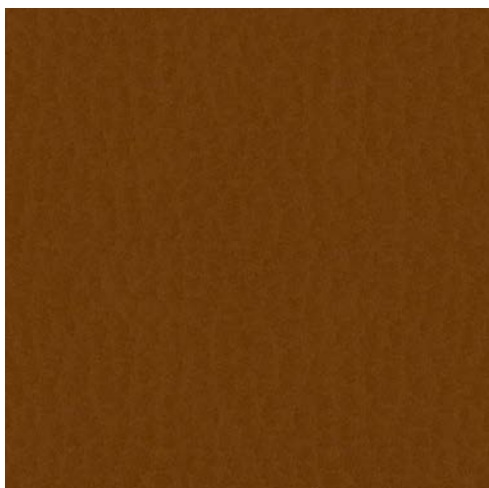
mobitec

SINCE 1990

RETAIL / CONTRACT

SOTEGA FLS

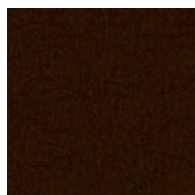
CL6



Composition	73% PVC / 2% PU / 25% CO
Martindale Turns	51.000
Fastness to Light	4-5
Fabric Width	+/- 140cm
Water and Stainrepellant finish	No
UK approved	Yes
Fire Norm En	EN 1021/1-2
Fire Norm UK	BS 5852/1-2
Cleaning Instructions	Clean with water



BLACK



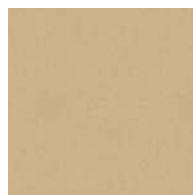
BROWN



CACAO



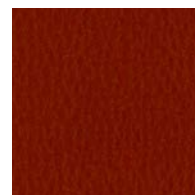
MASTIC



BEIGE



TAUPE



BRIQUE



TAILOR COLLECTION

CL6



BRUNO	
Composition	100% PL
Martindale Turns	25.000
Fastness to Light	5-6
Fabric Width / Weight	+/- 140 / 610g/lm
Water and Stainrepellant	No
UK approved	No
Cleaning Instructions:	



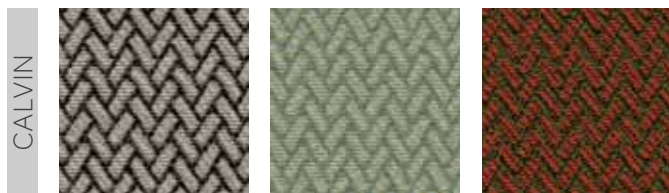
BRUNO

SILVER

CIEL



CALVIN	
Composition	100% PL
Martindale Turns	25.000
Fastness to Light	5-6
Fabric Width / Weight	+/- 140 / 560g/lm
Water and Stainrepellant	No
UK approved	No
Cleaning Instructions:	



CALVIN

SILVER

DUCK

TANGERINE



DRIES	
Composition	100% PL
Martindale Turns	50.000
Fastness to Light	5-6
Fabric Width / Weight	+/- 140 / 695g/lm
Water and Stainrepellant	No
UK approved	No
Cleaning Instructions:	

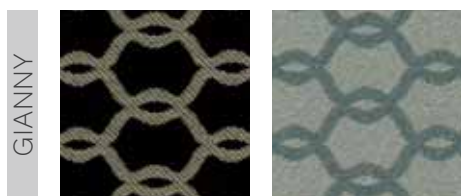


FRANCO	
Composition	100% PL
Martindale Turns	25.000
Fastness to Light	5-6
Fabric Width / Weight	+/- 140 / 600g/lm
Water and Stainrepellant	No
UK approved	No
Cleaning Instructions:	





GIANNY	
Composition	100% PL
Martindale Turns	25.000
Fastness to Light	5-6
Fabric Width / Weight	+/- 140 / 620g/lm
Water and Stainrepellant	No
UK approved	No
Cleaning Instructions:	



GIANNY

CARBONE

BLUE



KARL	
Composition	100% PL
Martindale Turns	100.000
Fastness to Light	5-6
Fabric Width / Weight	+/- 140 / 644g/lm
Water and Stainrepellant	No
UK approved	No
Cleaning Instructions:	



KARL

CARBONE

TAUPE

ECRU

KHAKI





CIEL

PETROL





GROSEILLE

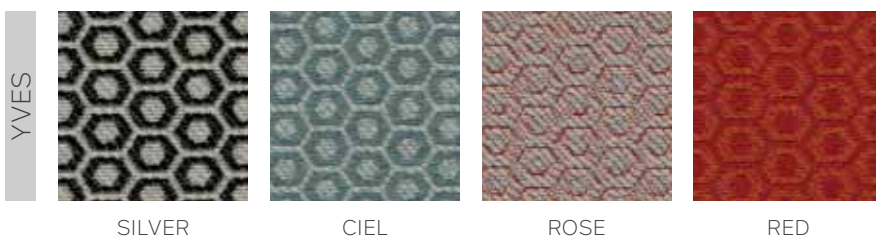
BRIQUE



VERA	
Composition	100% PL
Martindale Turns	100.000
Fastness to Light	5-6
Fabric Width / Weight	+/- 140 / 644g/lm
Water and Stainrepellant	No
UK approved	No
Cleaning Instructions:	   



YVES	
Composition	100% PL
Martindale Turns	25.000
Fastness to Light	5-6
Fabric Width / Weight	+/- 140 / 615g/lm
Water and Stainrepellant	No
UK approved	No
Cleaning Instructions:	   





HUGO	
Composition	100% PL
Martindale Turns	100.000
Fastness to Light	5-6
Fabric Width / Weight	+/- 140 / 615g/lm
Water and Stainrepellant	No
UK approved	No
Cleaning Instructions:	



mobitec

SINCE 1990

RETAIL & CONTRACT

BIARRITZ

CL7



Composition 100% PL

Martindale Turns 100.000

Fastness to Light 4-5

Fabric Width +/- 140cm

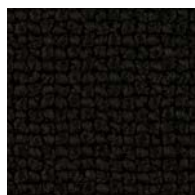
Water and Stainrepellant finish No

UK approved No

Cleaning Instructions



PLATINE



BLACK



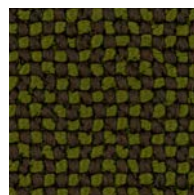
BROWN



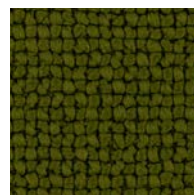
TAUPE



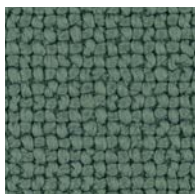
BEIGE



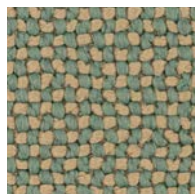
FOREST



GREEN



AQUA



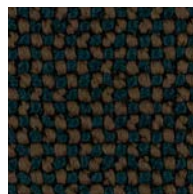
BLUE



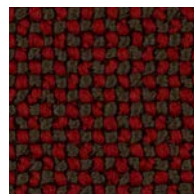
ARDOISE



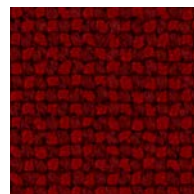
DUCK



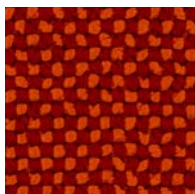
NAVY



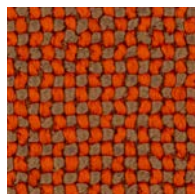
BORDEAUX



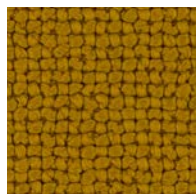
RED



BRIQUE



ORANGE



LIME

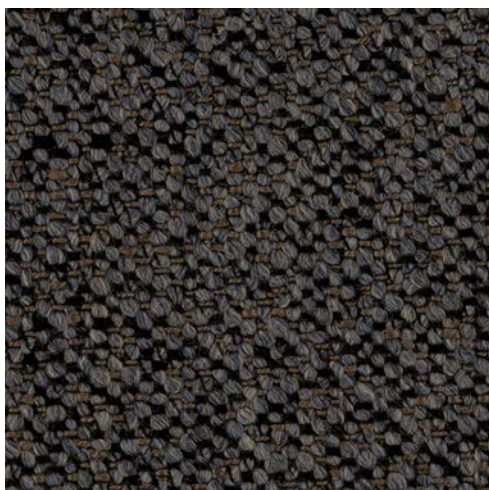
mobitec

SINCE 1990

RETAIL ONLY

SCALA

CL7



Composition 30% PL / 28% PC / 21% VI 12% CO / 9% LI


Martindale Turns 40.000

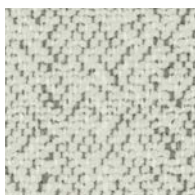
Fastness to Light 4-5

Fabric Width +/- 140cm

Water and Stainrepellant finish No

UK approved No

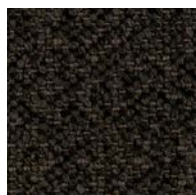
Cleaning Instructions 



WHITE



GREY



ANTHRACITE



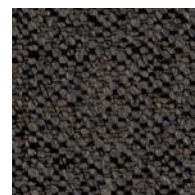
BEIGE



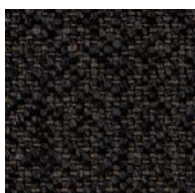
FOREST



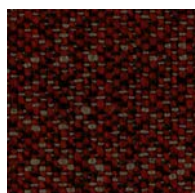
NAVY



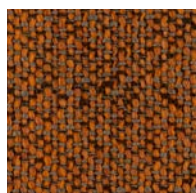
STEEL



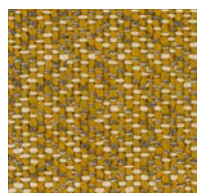
NIGHT



BORDEAUX



ORANGE



MUSTARD



LINEN

mobitec

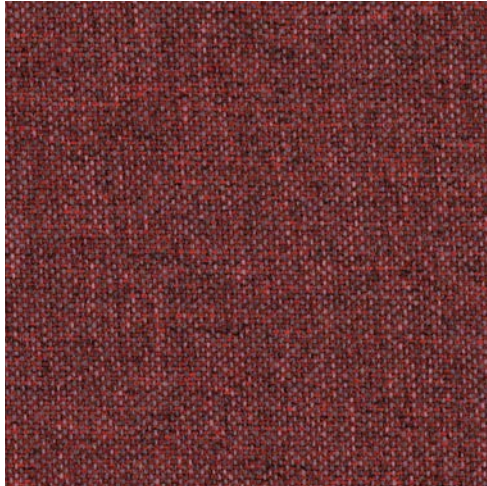
SINCE 1990





CONTRACT ONLY

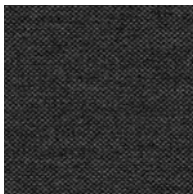
TREVIRA CS FR COLLECTION



CL5



GAFFARO	
Composition	100% PL - Trevira CS®
Martindale Turns	70.000
Fastness to Light	6
Fabric Width / Weight	+/- 140cm / 350g/lm
Water and Stainrepellant	No
UK approved	Yes
Cleaning Instructions:	   



ANTHRACITE



GREY



BEIGE



MUSTARD



GREEN



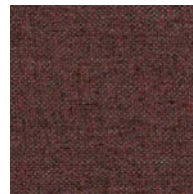
AQUA



JEANS



BLUE



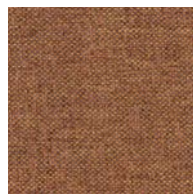
BORDEAUX



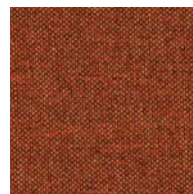
FUCHSIA



ROSE



PEACH



ROST

GAFFARO

TREVIRA CS® COLLECTION FLAMMABILITY

UNI 9174-8456 Class C1
DIN 4102 Class B1
NF 92501-7 Class M1
CRIB 5
EN 1021/1-2
IMO Part 8 Upholstery
UNI 9175 Class 1Im
BS 7176 Medium Hazard
NF D 60013 Class AM 18

mobitec

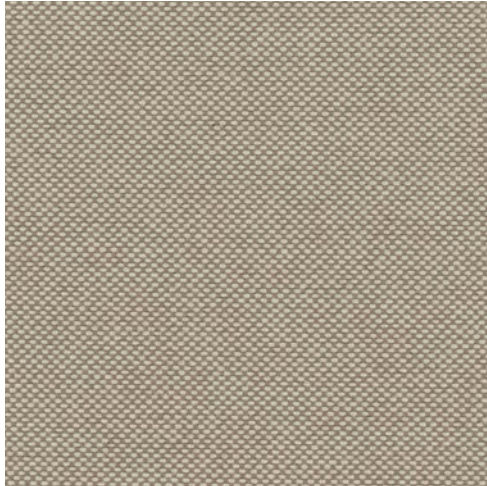
SINCE 1990

CONTRACT ONLY

TREVIRA CS FR COLLECTION



CL5



GRECI	
Composition	100% PL - Trevira CS®
Martindale Turns	70.000
Fastness to Light	6
Fabric Width / Weight	+/- 140cm / 365g/lm
Water and Stainrepellant	No
UK approved	Yes
Cleaning Instructions:	   



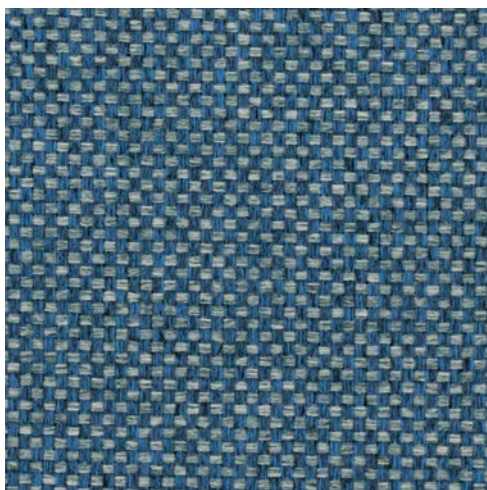
TREVIRA CS® COLLECTION FLAMMABILITY





UNI 9174-8456 Class C1
DIN 4102 Class B1
NF 92501-7 Class M1
CRIB 5
EN 1021/1-2
IMO Part 8 Upholstery
UNI 9175 Class 1Im
BS 7176 Medium Hazard
NF D 60013 Class AM 18



TREVIRA CS FR COLLECTION

CL7



OLIO	
Composition	100% PL - Trevira CS®
Martindale Turns	75.000
Fastness to Light	6
Fabric Width / Weight	+/- 150cm / 600g/lm
Water and Stainrepellant	No
UK approved	Yes
Cleaning Instructions:	   



OLIO

ANTHRACITE

CHOCOLATE

SAND

BEIGE

LINDEN

GREEN

CIEL

FUCHSIA

BRIQUE

ROST

TREVIRA CS® COLLECTION FLAMMABILITY

UNI 9174-8456 Class C1
 DIN 4102 Class B1
 NF 92501-7 Class M1
 CRIB 5
 EN 1021/1-2
 IMO Part 8 Upholstery
 UNI 9175 Class 1Im
 BS 7176 Medium Hazard
 NF D 60013 Class AM 18



PAGLIA	
Composition	100% PL - Trevira CS®
Martindale Turns	70.000
Fastness to Light	6
Fabric Width / Weight	+/- 150cm / 560g/lm
Water and Stainrepellant	No
UK approved	Yes
Cleaning Instructions:	   



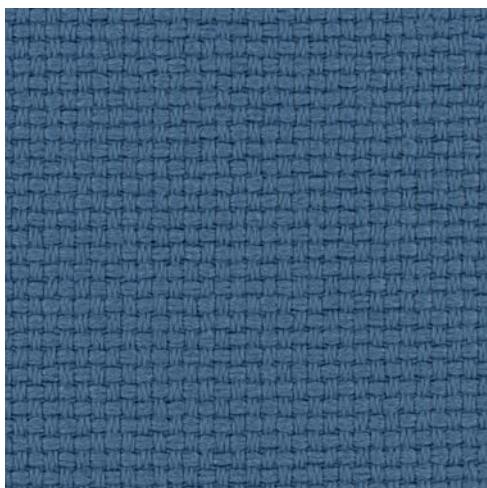
TREVIRA CS® COLLECTION FLAMMABILITY





UNI 9174-8456 Class C1
 DIN 4102 Class B1
 NF 92501-7 Class M1
 CRIB 5
 EN 1021/1-2
 IMO Part 8 Upholstery
 UNI 9175 Class 1Im
 BS 7176 Medium Hazard
 NF D 60013 Class AM 18



TREVIRA CS FR COLLECTION

CL7



RIALTO	
Composition	100% PL - Trevira CS®
Martindale Turns	150.000
Fastness to Light	6
Fabric Width / Weight	+/- 150cm / 735g/lm
Water and Stainrepellant	No
UK approved	Yes
Cleaning Instructions:	   



TREVIRA CS® COLLECTION FLAMMABILITY

UNI 9174-8456 Class C1
 DIN 4102 Class B1
 NF 92501-7 Class M1
 CRIB 5
 EN 1021/1-2
 IMO Part 8 Upholstery
 UNI 9175 Class 1Im
 BS 7176 Medium Hazard
 NF D 60013 Class AM 18

mobitec

SINCE 1990

RETAIL & CONTRACT

PUMA



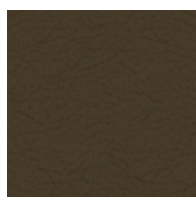
Composition	Real neat leather, rectified and pigmented
Martindale Turns	-
Fastness to Light	-
Fabric Width	-
Water and Stainrepellant finish	-
UK approved	-
Cleaning Instructions	-



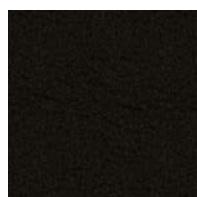
WHITE



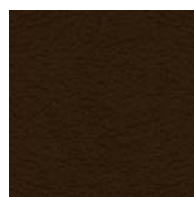
GREY



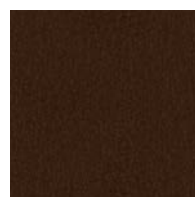
CARBONE



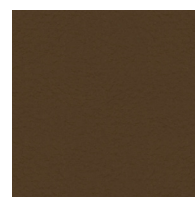
BLACK



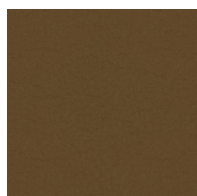
CHOCOLATE



BROWN



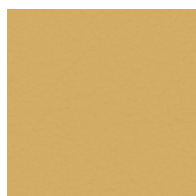
TAUPE



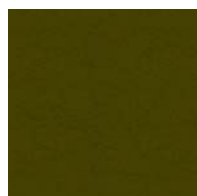
MASTIC



BEIGE



IVORY



OLIVE



BORDEAUX



ROSSO



CARMINE



NATURE



SAVANE

mobitec

SINCE 1990

RETAIL & CONTRACT

MONTANA



Composition Real neat leather, rectified and pigmented

Martindale Turns -

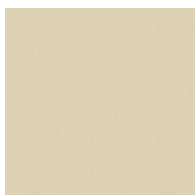
Fastness to Light -

Fabric Width -

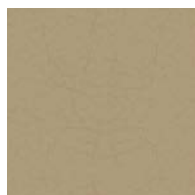
Water and Stainrepellant finish -

UK approved -

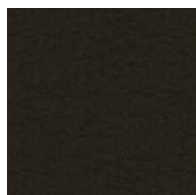
Cleaning Instructions -



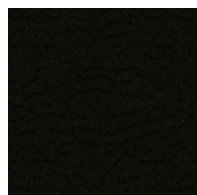
WHITE



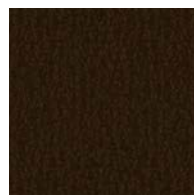
SILVER



ANTHRACITE



BLACK



BROWN



COFFEE



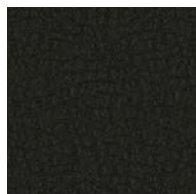
MASTIC



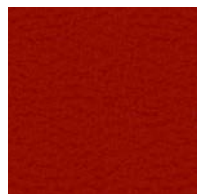
CREAM



LIME



DARK BLUE



RED



TANGERINE



ORANGE



SAND