

# Nouvion - Lederkollektion

## LEDERGRUPPE 1

### TOLEDO | KONTRASTNAHT IST TON IN TON



### CORDOBA | KONTRASTNAHT IST BEIGE



## LEDERGRUPPE 2

### IDAHO | KONTRASTNAHT IST TON IN TON



### KONGO | KONTRASTNAHT IST TON IN TON



### RANCHO | KONTRASTNAHT IST BEIGE



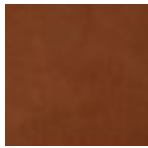
# Nouvion - Lederkollektion

## LEDERGRUPPE 2

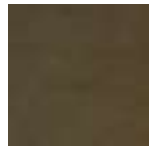
### SIERRA | KONTRASTNAHT IST BEIGE



Antracite



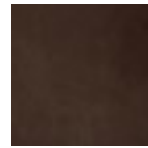
Cognac



Forest



Olive



Walnut

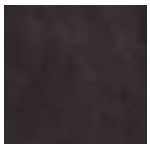
## LEDERGRUPPE 3

### CLOUDY | KONTRASTNAHT IST TON IN TON



Brown

### PAMPLONA | KONTRASTNAHT IST TON IN TON



Antracite



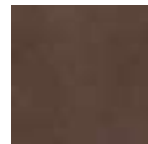
Black



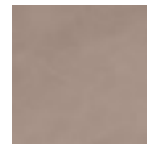
Dark Brown



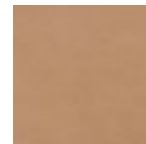
Forest



Lever



Light Grey



Savannah



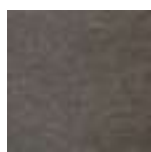
Steel



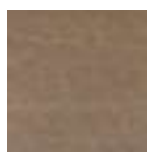
# Nouvion - Stoffkollektion

## STOFFGRUPPE A

### PAMPA | KONTRASTNAHT IST BEIGE



Antracite

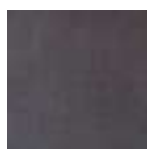


Beige

### ROYAL | KONTRASTNAHT IST BEIGE



Antraciet



Aqua



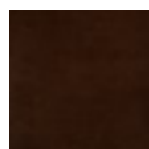
Cappucino



Coral



Dark Green



Espresso



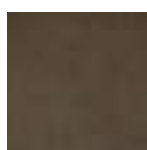
Forest



Grey



Lightgrey



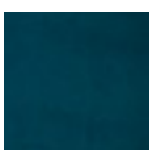
Liver



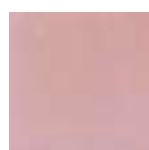
Navy



Onyx



Petrol



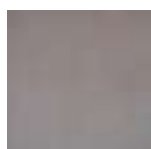
Pink



Scarlet



Skyblue

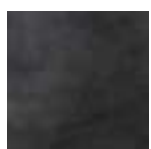


Steel

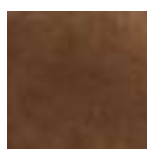


Sun

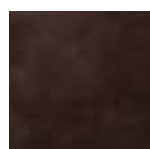
### COLORADO | KONTRASTNAHT IST SCHWARZ



Antraciet



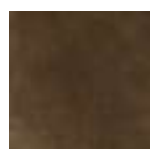
Cognac



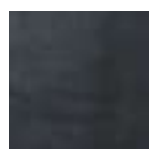
Espresso



Grey

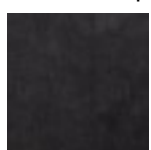


Olive

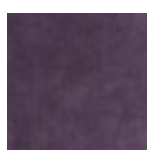


Steel

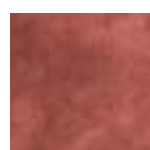
### ALMEIDA | KONTRASTNAHT IST TON IN TON



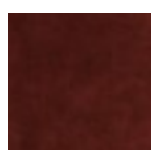
Antracite



Aubergine



Blush



Copper



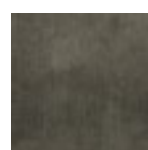
Dark Grey



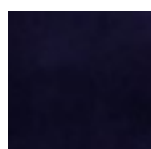
Dolphin



Gold



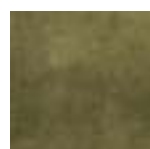
Hunter



Indigo



Liver



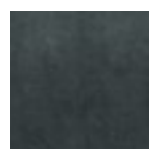
Moss



Niagara



Pale



Petrol

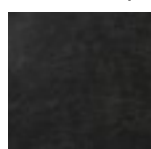


Steel

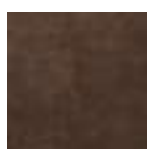


Winered

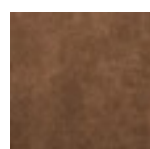
### GUARDA | KONTRASTNAHT IST TON IN TON



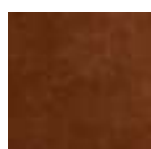
Antracite



Brown



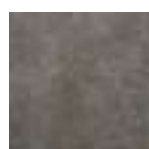
Camel



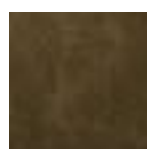
Cognac



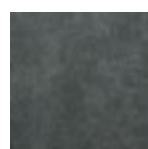
Dark Brown



Grey



Moss

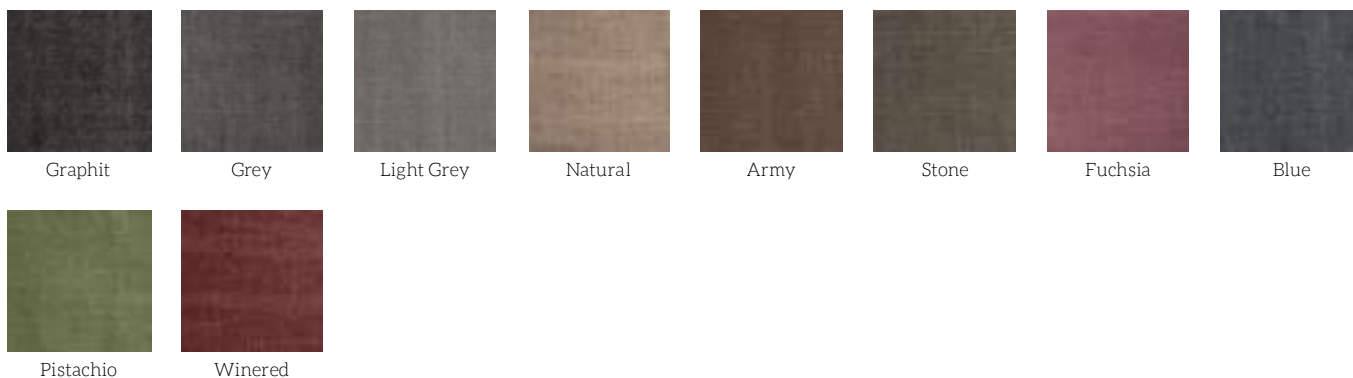


Niagara

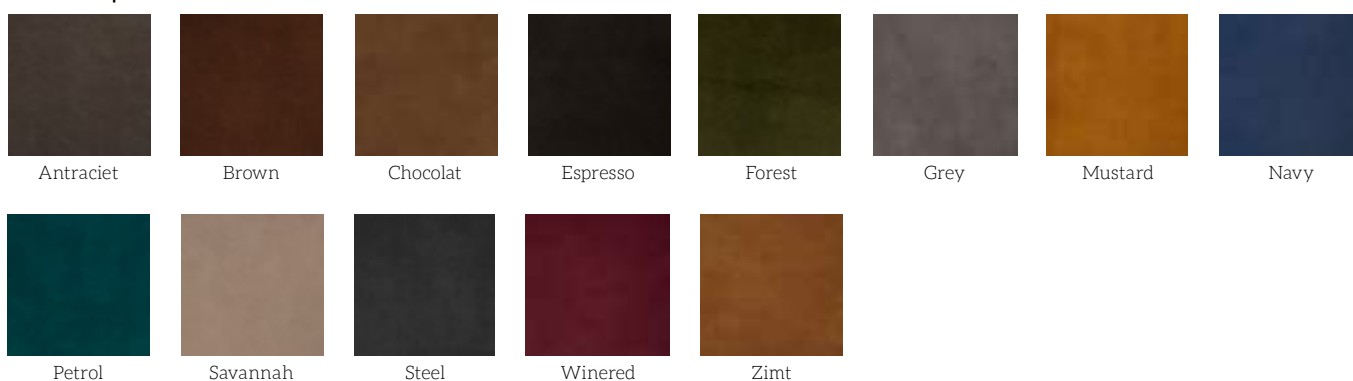
# Nouvion - Stoffkollektion

## STOFFGRUPPE B

### KISS | KONTRASTNAHT IST BEIGE



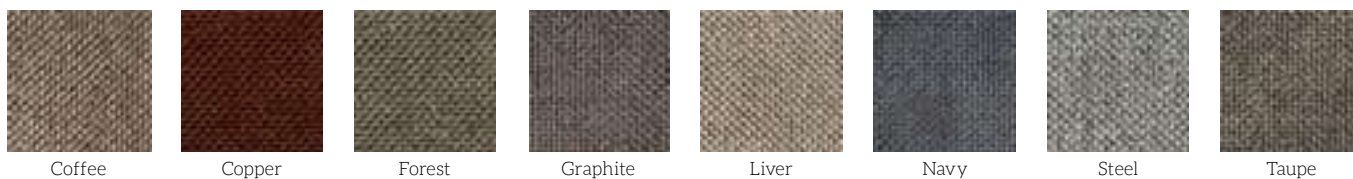
### SAMOA | KONTRASTNAHT IST BEIGE



### NEVADA | KONTRASTNAHT IST BEIGE



### VIDAGO | KONTRASTNAHT IST TON IN TON



# Nouvion - Stoffkollektion

## STOFFGRUPPE C

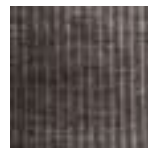
### CHAVES | KONTRASTNAHT IST TON IN TON



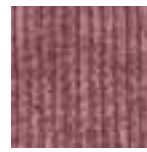
Forest



Graphite



Grey



Magnolia



Naturel



Steel



Sun



Taupe

### FACET | KONTRASTNAHT IST SCHWARZ



Blue



Fuchsia



Kiesel



Yellow



Light Blue



Light Grey

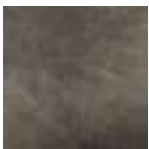


Middle Grey



Olive

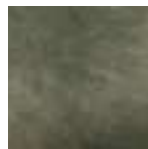
### SAHARA | KONTRASTNAHT IST BEIGE



Antracite



Cognac



Forest



Light Brown



Light Grey



Moss